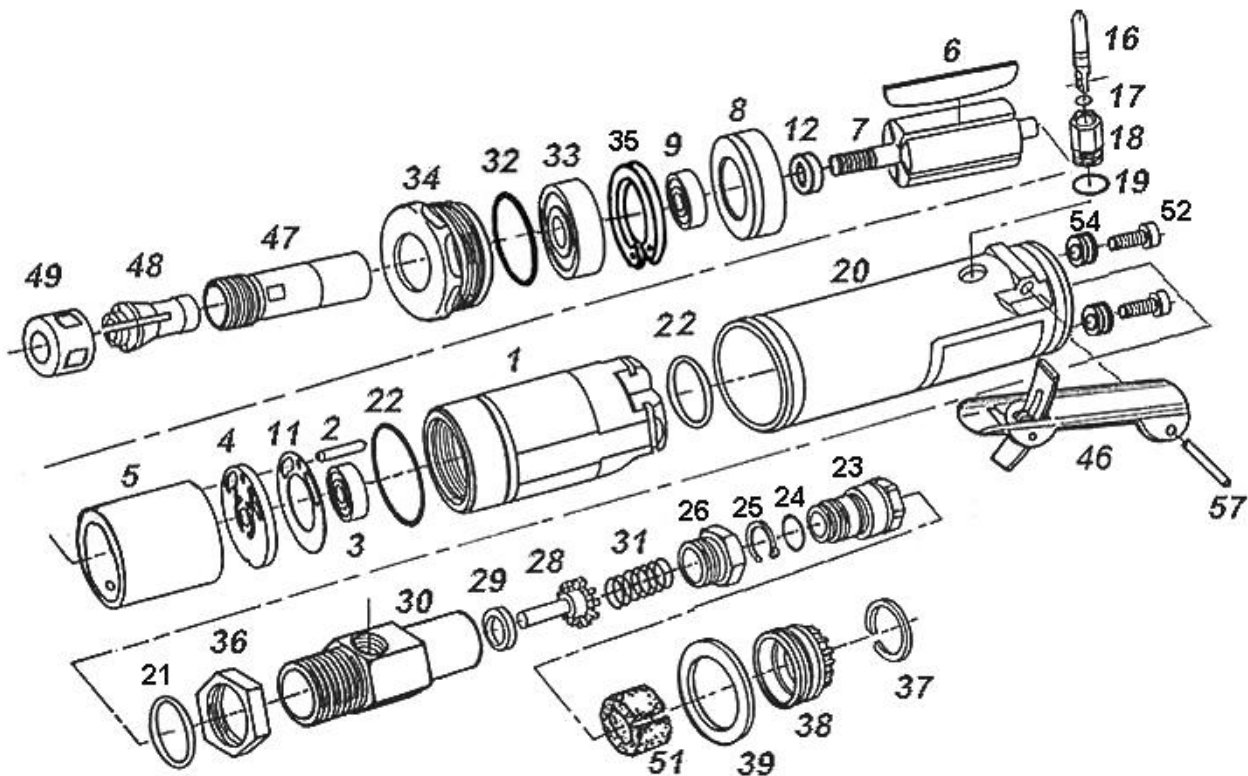


ZDG-S216 INDUSTRIAL DIE GRINDER



ZDG-S216 INDUSTRIAL DIE GRINDER

TECHNICAL DATA	Size of Collet	inch(mm)	1/4(6)
	Free Speed	R.P.M	16000
	Operating Air Pressure	PSI(bar)	90(6.2)
	Avg. Air Cons.	cfm(1/min)	7.8(220)
	Net Weight	lbs(kgs)	1.3(0.6)
	Overall Length	inch(mm)	6-3/16(157)
	Air Inlet Size	inch-NPT/PT	1/4
	Min. Hose Size	inch(mm)	3/8(10)

P A R T S L I S T

Index #	Part #	Description	Index #	Part #	Description
1.	ZDG-S216-01	Motor Housing	28.	ZDG-S216-28	Tip Valve
2.	ZDG-S216-02	Pin	29.	ZDG-S216-29	Washer
3.	ZDG-S216-03	Ball Bearing	30.	ZDG-S216-30	Valve Tube
4.	ZDG-S216-04	Rear Plate	31.	ZDG-S216-31	Spring
5.	ZDG-S216-05	Cylinder	32.	ZDG-S216-32	O-Ring
6.	ZDG-S216-06	Rotor Blade (6)	33.	ZDG-S216-33	Ball Bearing
7.	ZDG-S216-07	Rotor	34.	ZDG-S216-34	Clamp Nut
8.	ZDG-S216-08	Front Plate	35.	ZDG-S216-35	Clip Ring
9.	ZDG-S216-09	Ball Bearing	36.	ZDG-S216-36	Nut
11.	ZDG-S216-11	Motor Gasket	37.	ZDG-S216-37	Retainer Ring
12.	ZDG-S216-12	Spacer	38.	ZDG-S216-38	Exhaust Nozzle
16.	ZDG-S216-16	Valve Stem	39.	ZDG-S216-39	Washer
17.	ZDG-S216-17	O-Ring (P3X1.5)	46.	ZDG-S216-46	Safety Lever
18.	ZDG-S216-18	Throttle Bushing	47.	ZDG-S216-47	Grinder Tube
19.	ZDG-S216-19	O-Ring (8.2X1.2)	48.	ZDG-S216-48	Collet (6MM)
20.	ZDG-S216-20	Sleeve			Collet (1/4")
21.	ZDG-S216-21	O-Ring (20X1.2)	49.	ZDG-S216-49	Collet Nut
22.	ZDG-S216-22	O-Ring (36X2) (2)	51.	ZDG-S216-51	Muffler
23.	ZDG-S216-23	Air Inlet Bushing	52.	ZDG-S216-52	Screw (2)
24.	ZDG-S216-24	O-Ring (7.5X1.5)	54.	ZDG-S216-54	Rubber Washer (2)
25.	ZDG-S216-25	Retainer Ring	57.	ZDG-S216-57	Pin (2)
26.	ZDG-S216-26	Screw Bushing			