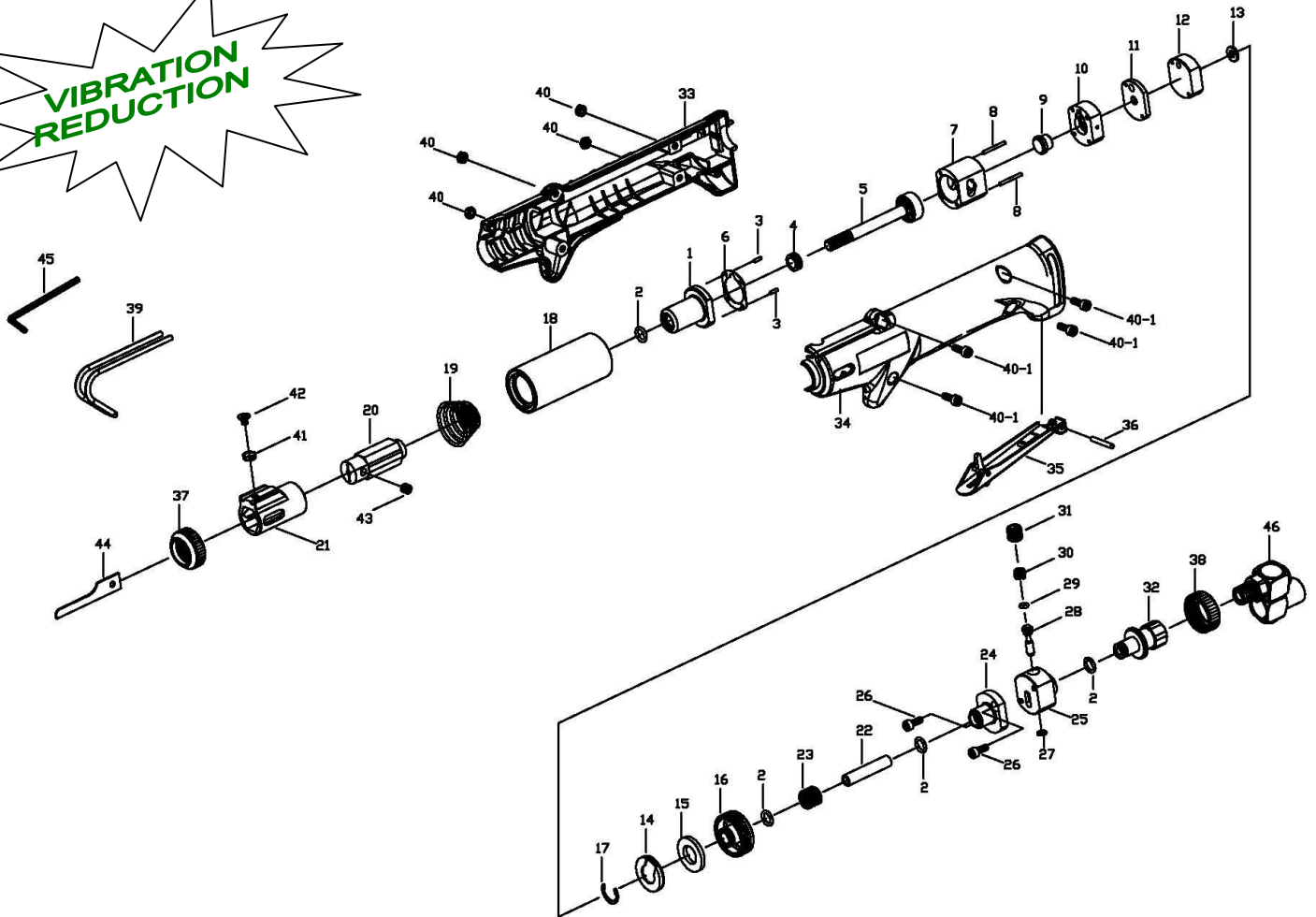


ZS319H Vibration Reduction Air Saw

U.S. PAT. NO. 6,149,356
VIBRATION REDUCTION



ZS319H Vibration Reduction Air Saw

U.S. PAT. NO. 6,149,356
VIBRATION REDUCTION

TECHNICAL DATA

Cutting Capacity-Thickness(Gauge)	: Steel 2.91 mm (9)
	: Alum. 3.26 mm(8)
Operating Air Pressure (Maximum)	: 6.3 Kg/Cm ² (90PSI)
Strokes Per Minute @90psi	: 9,500
Stroke Length	: 10 mm
Avg. Air Consumption	: 3(90) cfm(l/min)
Air Inlet (NPTF)	: 1/4"
Min. Hose Size	: 3/8" I.D.
Net Weight	: 0.53 kg (1.2lb)
Overall Length	: 263 mm (10-3/8")
Sound Pressure	: < 85 dBA
Vibration	: 3.7 m/s²
Standard Accessories Include	: 1 pc of 3mmHex Wrench
	: 1 each of 18T,24T &32T Saw Blade

PARTS LIST

Index	Part #	Description	Index	Part#	Description	Index	Part#	Description
1.	314403	Cylinder Head Ass'y	18.	315409	Main Liner	35.	315601	Safety Lever Ass'y
2.	OR0812	O-Ring (4)	19.	318607	Shock Absorbent Spring	36.	RP3022	Rear Dowel Pin
3.	RP2006	Front Dowel Pin (2)	20.	316407M	Blade Holder Ass'y	37.	318705	Lock Nut-Front
4.	314418	Bumper	21.	329102	Sliding Liner	38.	318707	Lock Nut-Rear
5.	315402	Piston Ass'y	22.	319202	Connecting Hose	39.	311714	Saw Blade Guide
6.	314405	Gasket	23.	319608	Spring	40.	NN0407B	Nut (4)
7.	314401	Cylinder	24.	319203	Lid-Valve	40-1	040710	Screw (4)
8.	RP2020	Rear Dowel Pin (2)	25.	319204	Valve Case	41.	315104	Spacer
9.	314302	Automatic Valve	26.	040712	Screw (2)	42.	040706M	Screw
10.	314311	Valve Chest	27.	OR0507	O-Ring	43.	061006	Set Screw
11.	314303	Valve Seat	28.	210602	Valve Stem	44.	314918Z-1	18T Saw Blade
12.	315304	Valve Cap	29.	OR0307	O-Ring		314924Z-1	24T Saw Blade
13.	318203	Rubber Washer	30.	318603	Spring		314932Z-1	32T Saw Blade
14.	318704	Muffler Cap	31.	182808	Plug Screw	45.	314933	3mm Hex Wrench
15.	301709	Muffler	32.	319708	Air Inlet	46.	922A18	1/4"NPT Universal Swivel
16.	318211	Adaptor	33.	319723R-A	Right Outer Housing			Air Inlet Joint (opt.)
17.	EC1317	Retaining Ring	34.	319723L-A	Left Outer Housing			